

**THE UNITED REPUBLIC OF TANZANIA  
NATIONAL EXAMINATIONS COUNCIL OF TANZANIA  
CERTIFICATE OF SECONDARY EDUCATION EXAMINATION**

**013**

**GEOGRAPHY**

(For Both School and Private Candidates)

**Time: 3 Hours**

**Year: 2020**

---

**Instructions**

1. This paper consists of sections A, B and C with a total of **ten (10)** questions.
2. Answer **all** questions in sections A and B and any **two (2)** questions from section C.
3. Section A carries **fifteen (15)** marks, section B **fifty five (55)** marks and section C carries **thirty (30)** marks.
4. Map extract of Sikonge (Sheet 137/2) is provided.
5. Programmable calculators, cellular phones and any unauthorized materials are **not** allowed in the examination room.
6. Write your **Examination Number** on every page of your answer booklet(s).

maktaba.tetea.org



## SECTION A (15 Marks)

Answer **all** questions in this section.

1. For each of the items (i) - (x), choose the correct answer from among the given alternatives and write its letter in the answer booklet(s) provided. **(10 marks)**
- (i) Why does the sun appear larger than other stars that are seen at night?  
A Starlight bends as it passes planets  
B The sun is closer to the earth than other stars  
C The earth's atmosphere filters out light from other stars  
D Daylight brightens the sun making it appear larger  
E The capacity of our eyes does not view far during the night
- (ii) Which layer of the earth forms the ocean floor?  
A Mantle                      B Sial                      C Sima  
D Core                      E Crust
- (iii) In the field study, students were told that, soil has certain biological, chemical and physical characteristics. What is the general term for these characteristics?  
A soil profile                      B soil particles                      C soil properties  
D soil fertility                      E soil formation.
- (iv) A girl was crossing a river and accidentally dropped her school bag in the river. The girl cried as she observed her bag being pulled by the river water toward the river mouth. What could the bag named in relation to the river action?  
A River erosion                      B River transportation  
C River load                      D River meander  
E River bed
- (v) Which of the following factors is **not** the cause of desertification in Tanzania?  
A Deforestation                      B Urban growth  
C Shifting cultivation                      D Over fishing  
E Bush fire
- (vi) Suppose you were interested in developing energy from the remains of living things. What will be the best raw material for your project?  
A Running water                      B Petroleum  
C Solar energy                      D Coal  
E Natural gas
- (vii) The Amazon and Congo basins are regions characterized with the same geographical background to human activities, climate, vegetation and relief. What could be the general term for these regions?  
A Natural region                      B Natural resources  
C Natural vegetation                      D Natural landscape  
E Natural climate



## SECTION B (55 Marks)

Answer **all** questions in this section.

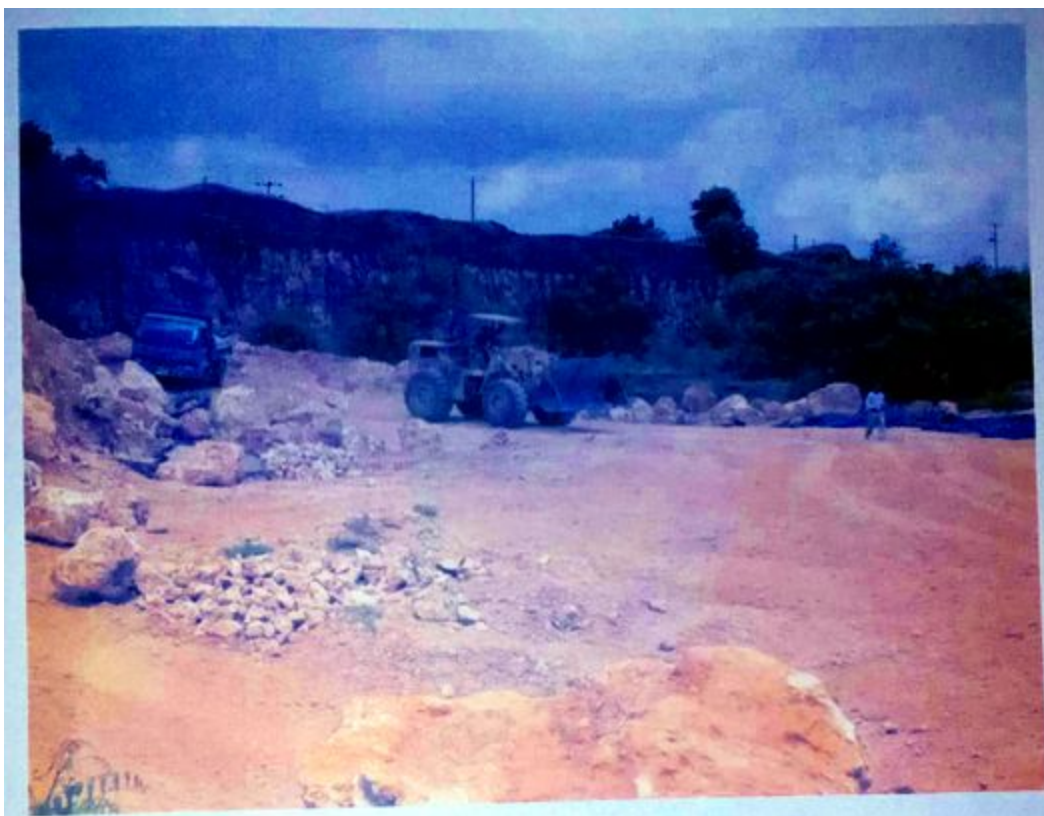
3. Carefully study the map extract of Sikonge (Sheet 137/2) provided, then answer the following questions:
- Calculate the total distance covered in Kilometers if the car was travelling from Sikonge town (732787) to Iyombakuzoa church (755765) and turned back to Sikonge town.
  - With evidence from the map, describe the nature of relief in the mapped area.
  - Calculate the gradient from grid reference 835846 to 782786.
  - Find the highest point on the given map and give its grid references and direction.
  - State the general direction of slope of the land in the mapped area.

4. Carefully study the weather data for a station in Australia and answer the questions that follow.

| Month         | J    | F    | M    | A   | M    | J  | J   | A   | S  | O  | N   | D   |
|---------------|------|------|------|-----|------|----|-----|-----|----|----|-----|-----|
| Temp (°C)     | 28.3 | 27.5 | 28.5 | 29  | 26.7 | 26 | 26  | 25  | 24 | 26 | 27  | 28  |
| Rainfall (mm) | 380  | 330  | 240  | 175 | 170  | 5  | 2.5 | 2.2 | 17 | 50 | 210 | 230 |

- Calculate the annual mean temperature for the station.
  - Determine the rainfall range.
  - Find the temperature mode and median.
  - Comment on the relationship between temperature and rainfall for the station.
  - Giving two examples, show the application of the data in the daily life.
5. Suppose you want to conduct a research about maize production in your district from 2008 to 2018 and your interest is to know whether the production has increased or decrease. Your plan is to consult farmers who were directly involved in the maize production for the said period and visit the District Agriculture Officer for more information.
- What will be the best research approach for your study?
  - Name the main source of data for your study.
  - Identify two individuals who will be respondents for your study.
  - Mention other six possible sources of research problems for the similar study.
6.
  - Using well labeled diagrams, show two stages of rift valley formation by tensional forces.
  - Explain four benefits of rift valley to societies in Tanzania.

7. Carefully study the following photograph and answer the questions that follow:

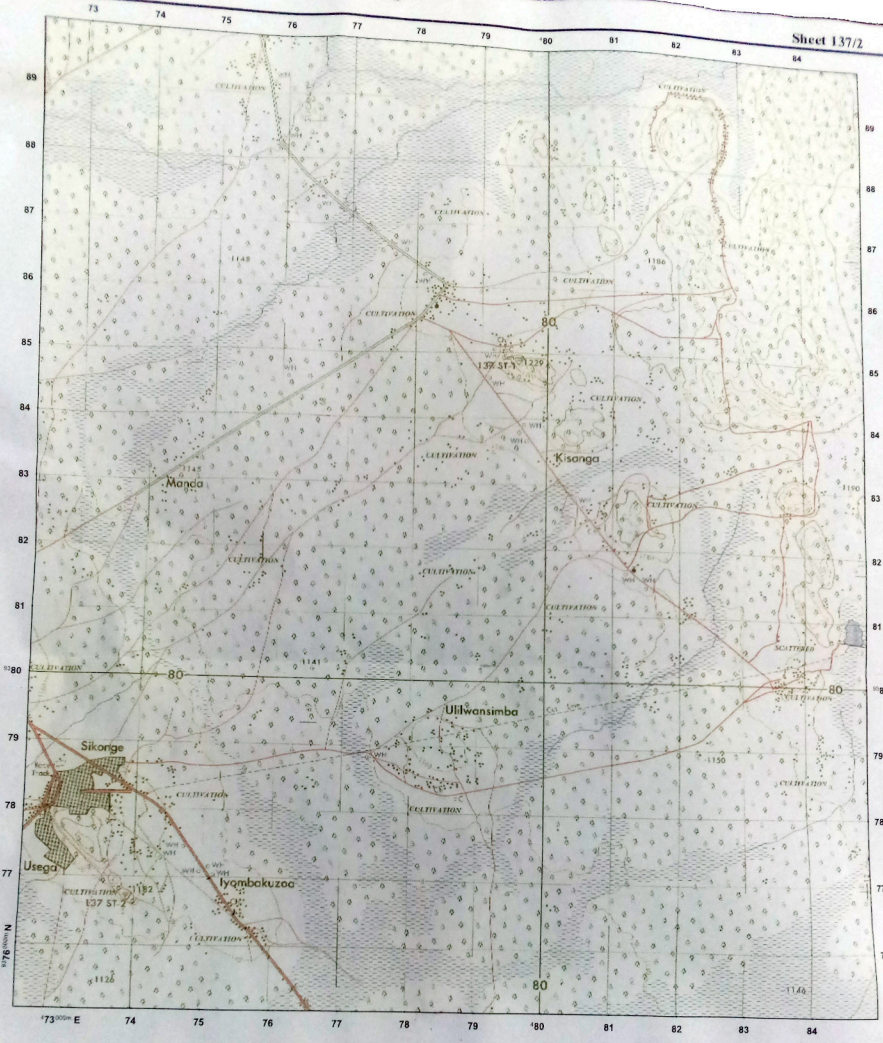


- (a) Name the type of rock seen in the photograph.
- (b) Giving two evidences, briefly explain the type of photograph.
- (c) With two evidences, suggest the scale of production for the activity taking place.
- (d) What is the main economic activity carried out in the area?
- (e) Mention three negative outcomes of the economic activity taking place to the environment.

### SECTION C (30 Marks)

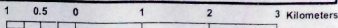
Answer **two (02)** questions from this section.

8. In six points, explain lessons that Tanzania tourism industry has to learn from Switzerland so as to improve more in this sector.
9. Migration is caused by both pull and push factors. Using six points, justify this statement.
10. The Form Three students were told by their Geography teacher to perform a survey activity around the school compound. Explain eight pre-survey activities they need to consider?



Extract from Sikonge, Sheet 137/2  
 Series Y742, Edition 1 - TSD, Ministry of Lands,  
 Government of the United Republic of Tanzania, 1978

HEIGHTS IN METRES



Scale 1: 50,000

|                                              |  |                                          |  |                                                              |  |                                                                                                                                                                                                                                                                                                                                                              |
|----------------------------------------------|--|------------------------------------------|--|--------------------------------------------------------------|--|--------------------------------------------------------------------------------------------------------------------------------------------------------------------------------------------------------------------------------------------------------------------------------------------------------------------------------------------------------------|
| Town or area with Permanent Buildings        |  | Steep Slope                              |  | Forest                                                       |  | <b>ABBREVIATIONS</b><br>CBP Canton Buying Post<br>Ch Church<br>CHH Court House<br>DC District Commissioner<br>Disp Dispensary<br>Hosp Hospital<br>HC Health Center<br>M Mission<br>Mkt Market<br>Mosq Mosque<br>MwW Ministry of Works<br>PO Post Office<br>PP Police Post<br>PS Police Station<br>RH Rest House<br>Sch School<br>T Telephone<br>TU Telegraph |
| Other Populated Area                         |  | Contours (V.I. 20m) ... Depression       |  | Thicket                                                      |  |                                                                                                                                                                                                                                                                                                                                                              |
| Houses                                       |  | Air Photo Principal Point with Film No.  |  | Bamboo                                                       |  |                                                                                                                                                                                                                                                                                                                                                              |
| All Weather Road                             |  | Water Course, Waterfall                  |  | Riverine Trees                                               |  |                                                                                                                                                                                                                                                                                                                                                              |
| Bound Surface                                |  | Rapids, Dams                             |  | Plantation (Coffee, C. Palm, Sisal S., Sugar, Su, Wattle W.) |  |                                                                                                                                                                                                                                                                                                                                                              |
| All Weather Road                             |  | Water Course, ( Wide ), Waterfall Rapids |  | Woodland                                                     |  |                                                                                                                                                                                                                                                                                                                                                              |
| Loose Surface                                |  | Watercourse (Indefinite)                 |  | Scrub                                                        |  |                                                                                                                                                                                                                                                                                                                                                              |
| Dry Weather Road                             |  | Borehole, Waterhole, Well, Spring        |  | Scattered Trees                                              |  |                                                                                                                                                                                                                                                                                                                                                              |
| Main Track (Motorable)                       |  | Bond, Major Fence, Hedge                 |  | Palm Trees                                                   |  |                                                                                                                                                                                                                                                                                                                                                              |
| Other Track and Footpath                     |  | Cliff                                    |  | Seasonal Swamp                                               |  |                                                                                                                                                                                                                                                                                                                                                              |
| Car Lane                                     |  |                                          |  |                                                              |  |                                                                                                                                                                                                                                                                                                                                                              |
| Railway, Sidings, Station, Canal, Irrigation |  |                                          |  |                                                              |  |                                                                                                                                                                                                                                                                                                                                                              |
| Seasonal Line                                |  |                                          |  |                                                              |  |                                                                                                                                                                                                                                                                                                                                                              |

