

**THE UNITED REPUBLIC OF TANZANIA  
NATIONAL EXAMINATIONS COUNCIL OF TANZANIA  
CERTIFICATE OF SECONDARY EDUCATION EXAMINATION**

**031/1**

**PHYSICS 1**  
(For Both School and Private Candidates)

**Time: 3 Hours**

**Friday, 08<sup>th</sup> November 2019 a.m.**

---

**Instructions**

1. This paper consists of sections A, B and C with a total of **eleven (11)** questions.
2. Answer **all** questions in sections A and B and **two (2)** questions from section C.
3. Cellular phones and any unauthorized materials are **not** allowed in the examination room.
4. Non-programmable calculators may be used.
5. Write your **Examination Number** on every page of your answer booklet(s).
6. Where necessary the following constants may be used:
  - (i) Acceleration due to gravity,  $g = 10 \text{ m/s}^2$ .
  - (ii) Density of water =  $1.0 \text{ g/cm}^3$ .
  - (iii) Pi,  $\pi = 3.14$ .
  - (iv) Coefficient of linear expansivity of the brick =  $1.2 \times 10^{-5} \text{ K}^{-1}$
  - (v) Speed of light in air =  $3 \times 10^8 \text{ m/s}$ .
  - (vi) Speed of sound in air =  $340 \text{ m/s}$ .

maktaba.tetea.org



## SECTION A (15 Marks)

Answer **all** questions in this section.

1. For each of the items (i) - (x), choose the correct answer among the given alternatives and write its letter beside the item number in the answer booklet provided.
  - (i) Which pairs of instruments would you use to correctly measure the diameter of a small ball bearing?
    - A Measuring tape and vernier caliper
    - B Slide rule and micrometer screw gauge
    - C Vernier caliper and slide rule
    - D Micrometer screw gauge and vernier caliper
    - E Metre rule and micrometer screw gauge
  - (ii) A piece of cork of volume  $100 \text{ cm}^3$  is floating on the surface of water. If the density of the cork is  $0.25 \text{ g cm}^{-3}$ , what volume of the cork is immersed in the water?
    - A  $100 \text{ cm}^3$
    - B  $0.25 \text{ cm}^3$
    - C  $25 \text{ cm}^3$
    - D  $100.25 \text{ cm}^3$
    - E  $0.025 \text{ cm}^3$
  - (iii) A layer of colorless water floating on a blue copper (II) sulphate solution becomes blue after sometime. Which physical process supports the observation made?
    - A Diffusion
    - B Cohesive
    - C Surface tension
    - D Adhesive
    - E Osmosis
  - (iv) A pin-hole camera 200 mm long produces an image of 2 mm diameter of the sun. If the sun's distance from the earth is about  $1.5 \times 10^8 \text{ km}$ , what is the diameter of the sun?
    - A  $1.5 \times 10^8 \text{ km}$
    - B  $1.5 \times 10^6 \text{ km}$
    - C  $3 \times 10^5 \text{ km}$
    - D  $7.5 \times 10^4 \text{ km}$
    - E  $3.0 \times 10^3 \text{ km}$
  - (v) Which phenomena is a result of the earth being exactly along the same line between the centre of the sun and the moon?
    - A Lunar eclipse
    - B Penumbra
    - C Solar eclipse
    - D Umbra
    - E Reflection
  - (vi) Which metals become strongly magnetized when subjected to a magnetic field?
    - A Nickel and copper
    - B Zinc and aluminium
    - C Cobalt and iron
    - D Aluminium and lead
    - E Iron and zinc
  - (vii) A body moved upward a distance of 20 m. Calculate the time taken to reach the maximum height.
    - A 2 s
    - B 5 s
    - C 10 s
    - D 15 s
    - E 11 s

- (viii) The temperature of a certain liquid is measured to be 300K. What will be its temperature in degrees centigrade?  
 A 273°C                      B 100°C                      C 57°C  
 D 37°C                      E 27°C
- (ix) Which factors influence friction between tyres of a car moving with constant speed and surface of the road?  
 A Weight and speed                      B Speed and nature of the surface  
 C Nature of the surface and weight                      D Surface area of the tires and speed  
 E Acceleration and nature of the surface
- (x) When the sun shines on the dark-coloured driving wheel of a car, the wheel feels warm. Why?  
 A It is because the sun warms the car by induction.  
 B It is because the sun gives energy to the wheel by convection.  
 C It is because the sun radiates thermal energy to the wheel.  
 D It is because the sun conducts thermal energy to the wheel.  
 E It is because the sun conducts thermal energy to the wheel.

2. Match the properties of radiations in **List A** with the corresponding radiations in **List B** by writing the letter of the correct response beside the item number in the answer booklet provided. The responses might be used more than once.

List A	List B
(i) Has weak-moderate ionising power.	<p style="text-align: center;">A sheet of paper                      Aluminium foil                      A lead block</p>
(ii) Is deflected towards south pole of the magnet.	
(iii) Has high penetrating power but stopped by lead sheet.	
(iv) Has the least penetrating power but stopped by a sheet of paper.	
(v) Has a speed up to 10% times the speed of light in vacuum.	

## SECTION B (60 Marks)

Answer **all** questions in this section.

3. (a) In a light experiment, a narrow beam of light directed onto a glass prism leaves the prism and falls on a white screen. Draw a labelled diagram to show the experimental set-up and observation seen on a screen. **(5 marks)**
- (b) Explain two ways in which lens cameras differ from the human eye. **(5 marks)**
4. (a) Why a bubble of air increases in volume as it rises from the bottom of a pond of water to the surface? Briefly explain. **(5 marks)**
- (b) A half meter rule AB is freely pivoted at 18 cm from end A and balances horizontally when a body of mass 35 g is hung 48 cm from end B. Calculate the mass of the rule. **(5 marks)**
5. (a) Figure 1 shows a simple machine B which has to be used to pull the packing case of 2000 N into the car by an effort of 500 N. Calculate the efficiency of machine B. **(5 marks)**

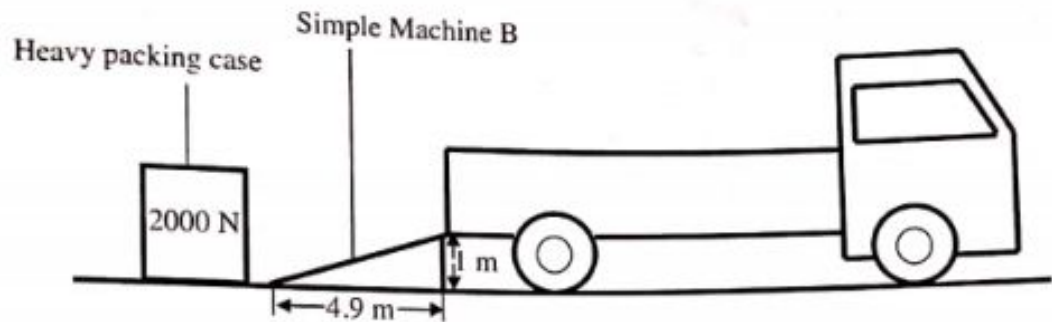


Figure 1

- (b) With the aid of a clearly labelled diagram, describe an experiment to investigate the relationship between the force acting on a body and the acceleration produced. **(5 marks)**
6. (a) A beaker containing ice is heated from  $-5^{\circ}\text{C}$  to  $0^{\circ}\text{C}$  and then from  $0^{\circ}\text{C}$  to  $15^{\circ}\text{C}$ . With the aid of a diagram, explain the variation of density with temperature. **(5 marks)**
- (b) A brick at  $20^{\circ}\text{C}$  has a dimension of 30 cm, 18 cm and 10 cm for length, width and height respectively. If a brick is heated to a new temperature of  $150^{\circ}\text{C}$ , calculate the new dimensions. **(5 marks)**

7. (a) With the aid of a diagram, explain the function of a fuse in an electrical appliance. **(5 marks)**
- (b) A circuit in a house is protected by a 10 A fuse. The circuit is connected to the 240 V mains. The following appliances are connected to the circuit:

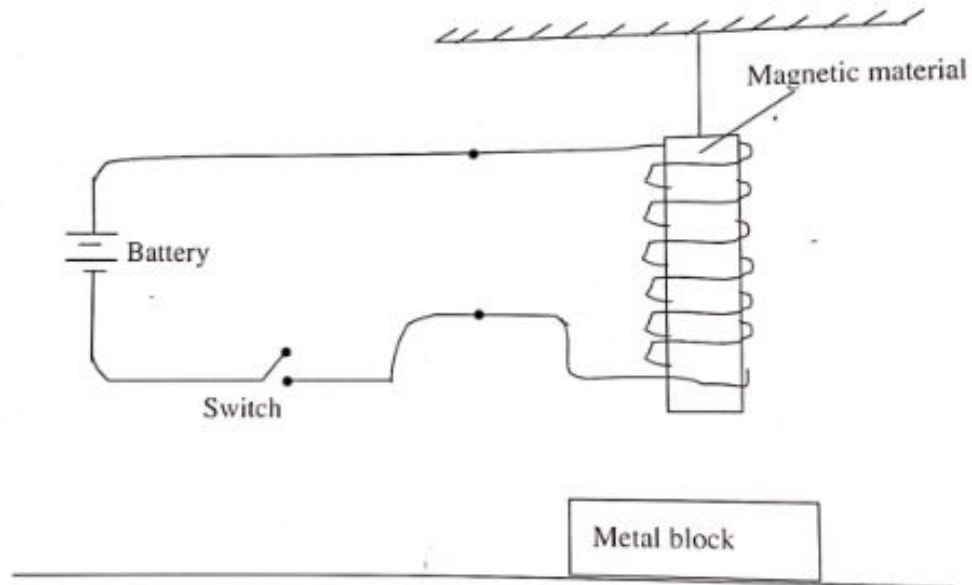
Appliance	Power rating
Bulb 1	100 W
Bulb 2	75 W
TV	300 W
Heater	1500 W

- Determine whether the fuse will blow on or off if all appliances are turned on. **(5 marks)**
8. (a) Why the inner core of the earth is solid while the outer core is liquid? Briefly explain. **(5 marks)**
- (b) The frequency obtained from a plucked string when the tension is 2 N is 400 Hz. Calculate the frequency when the tension is increased by 6 N. **(5 marks)**

### SECTION C (25 Marks)

Answer **two (2)** question from this section.

9. (a) Carefully study Figure 2 which shows a design for an electrical operation model for lifting metal objects. Briefly explain three things you can do so that a heavier iron metal block can be lifted. **(6 marks)**



**Figure 2**

- (b) Why a musician must retune a stringed instrument if its temperature changes? **(2.5 marks)**
- (c) During a thunderstorm, the time between the flash of light and the thunder is 10 s. How far away is the thunderstorm? **(4 marks)**
10. (a) A sample of carbon isotope  $^{14}_6\text{C}$  has a half-life of 5700 years. What fraction of  $^{14}_6\text{C}$  will remain after 11400 years? **(6 marks)**
- (b) Describe the construction and mode of action of the PN junction semiconductor. **(6.5 marks)**
11. (a) Electrical energy is distributed in all parts of Tanzania by the National grid system which transmits alternating current at a very high voltage. Explain why is it necessary to have a very high voltage? **(5.5 marks)**
- (b) A generator producing a varying current from 0 to 10 A was allowed to flow in a coil of magnetic field. After a time interval the current was observed to be 4 A. Describe how back e.m.f. Was induced in a self-induction. **(7 marks)**